

APPENDIX H



APPENDIX H.

Complete Street Corridor Studies Planning Maps

The maps in this appendix provide critical planning context for the Complete Streets Corridor Studies identified in the Berkeley Bike Plan. These maps are from the City of Berkeley General Plan; the Alameda County Transportation Commission Countywide Multimodal Arterial Plan; and the AC Transit Major Corridors Study. They are intended to clarify the relationship between the Bike Plan recommendations for Complete Streets Corridors and the modal priorities established in City of Berkeley and countywide planning documents.

City of Berkeley General Plan Figure 7 - Transit Map:

- Illustrates the Council-adopted citywide network of Primary and Secondary Transit Routes on Berkeley streets.

Alameda CTC Countywide Multimodal Arterial Plan Maps:

- Transit Emphasis and Bicycle Emphasis modal priority maps: These maps illustrate the modal priorities for transit and bicycling established in the Countywide Multimodal Arterial Plan. Specifically, the maps identify which streets on the countywide roadway network are designated as transit priority and which are designated as bicycle priority.
- Figure 3.4.1: Proposed Bicycle Improvements - North Planning Area: This map illustrates an unconstrained vision for potential countywide

bicycle improvements and is consistent with the recommended studies and projects in the Berkeley Bike Plan. These improvements will be studied as part of a larger Complete Streets Corridor Study process guided by the modal priorities established in the modal emphasis maps in the Countywide Multimodal Arterial Plan.

AC Transit Major Corridors Study: The following maps illustrate AC Transit's proposed transit improvements on Primary Transit Routes in Berkeley. At the conclusion of the Complete Streets Corridor Study process, design alternatives which have a significant negative effect on transit on these Primary Transit Routes will not be recommended. Criteria to define what constitutes a significant negative effect on transit will be developed and applied during the Study process for each corridor. Example criteria for evaluating transit impacts are provided in Section 5.7 of this Plan.

- Figure 4 - Map of Major Corridors
- San Pablo Avenue/Macdonald Avenue Corridor Map
- Shattuck Avenue/Martin Luther King Jr. Way Corridor Map
- Broadway/College Avenue/University Avenue Corridor Map
- Adeline Street Map
- Telegraph Avenue Corridor Map

Figure H-1: City of Berkeley General Plan Figure 7 - Transit Map

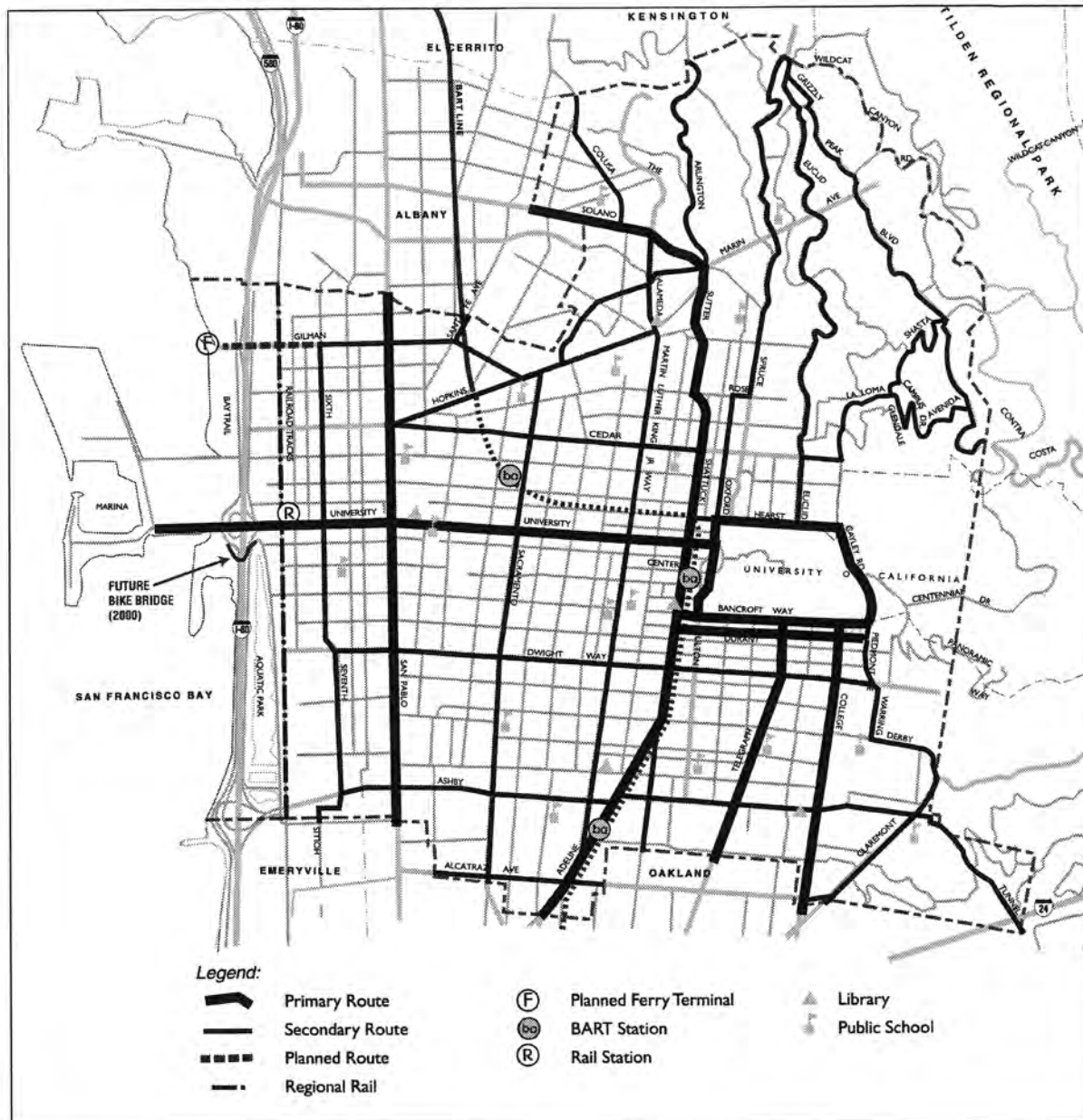


Figure H-2: Alameda CTC Countywide Multimodal Arterial Plan Maps

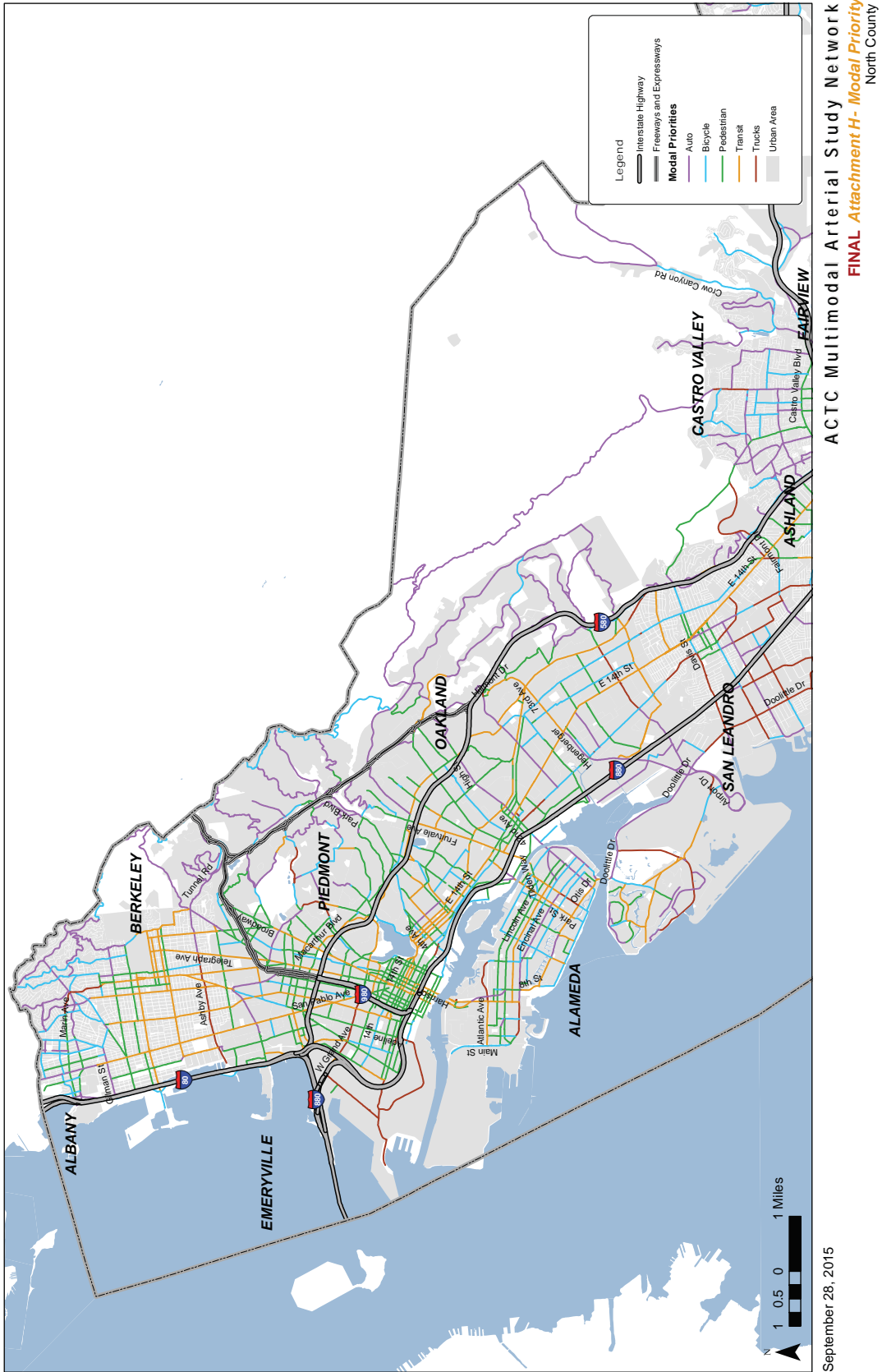
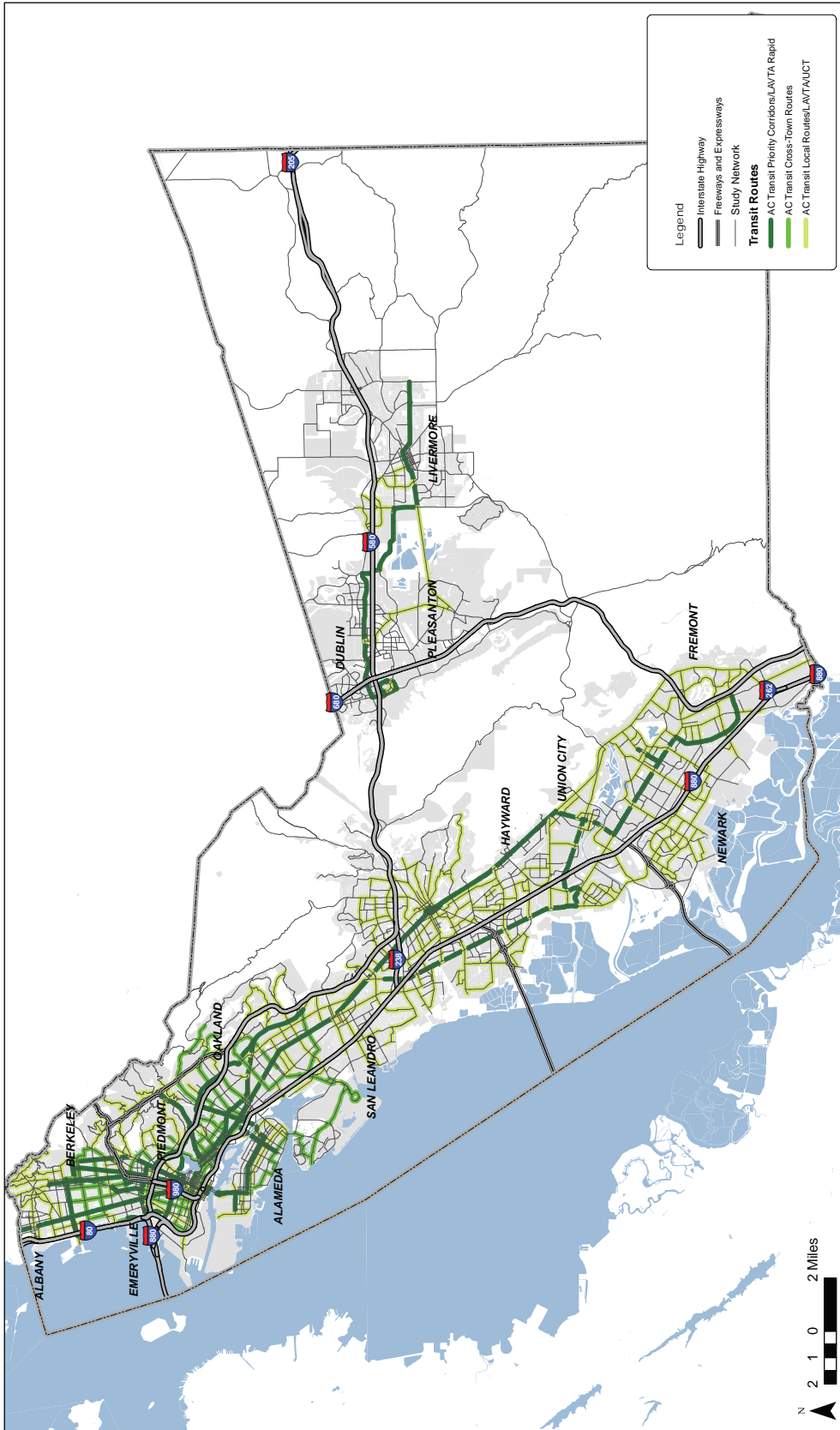


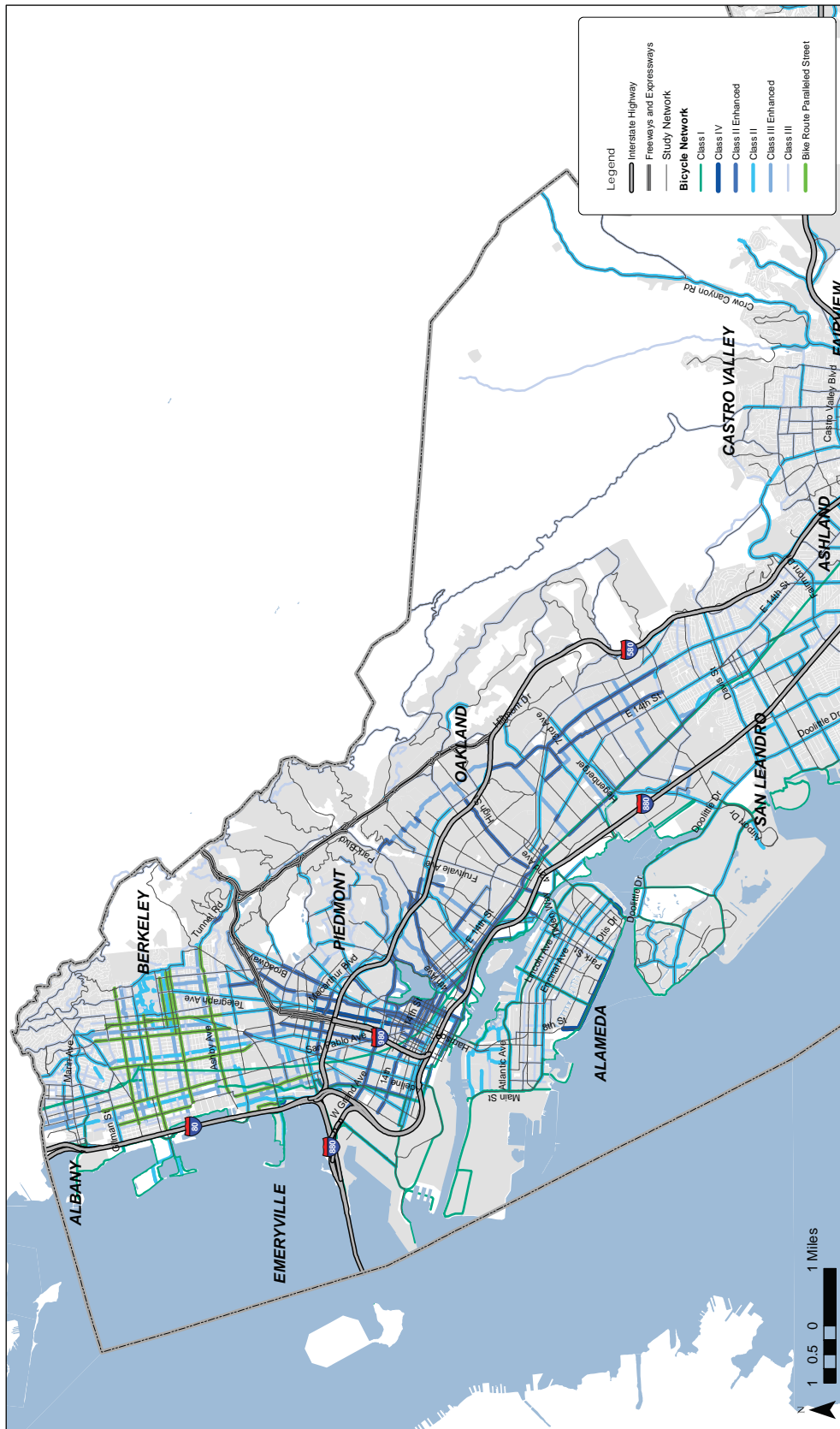
Figure H-3: Alameda CTC Countywide Multimodal Arterial Plan Maps



ACTC Multimodal Arterial Study Network
FINAL Attachment D - Transit Emphasis

September 16, 2015

Figure H-4: Alameda CTC Countywide Multimodal Arterial Plan Maps



ACTC Multimodal Arterial Study Network
FINAL Attachment E - Bicycle Emphasis
 North County

September 16, 2015

Figure 3.4.1: Proposed Bicycle Improvements—North Planning Area

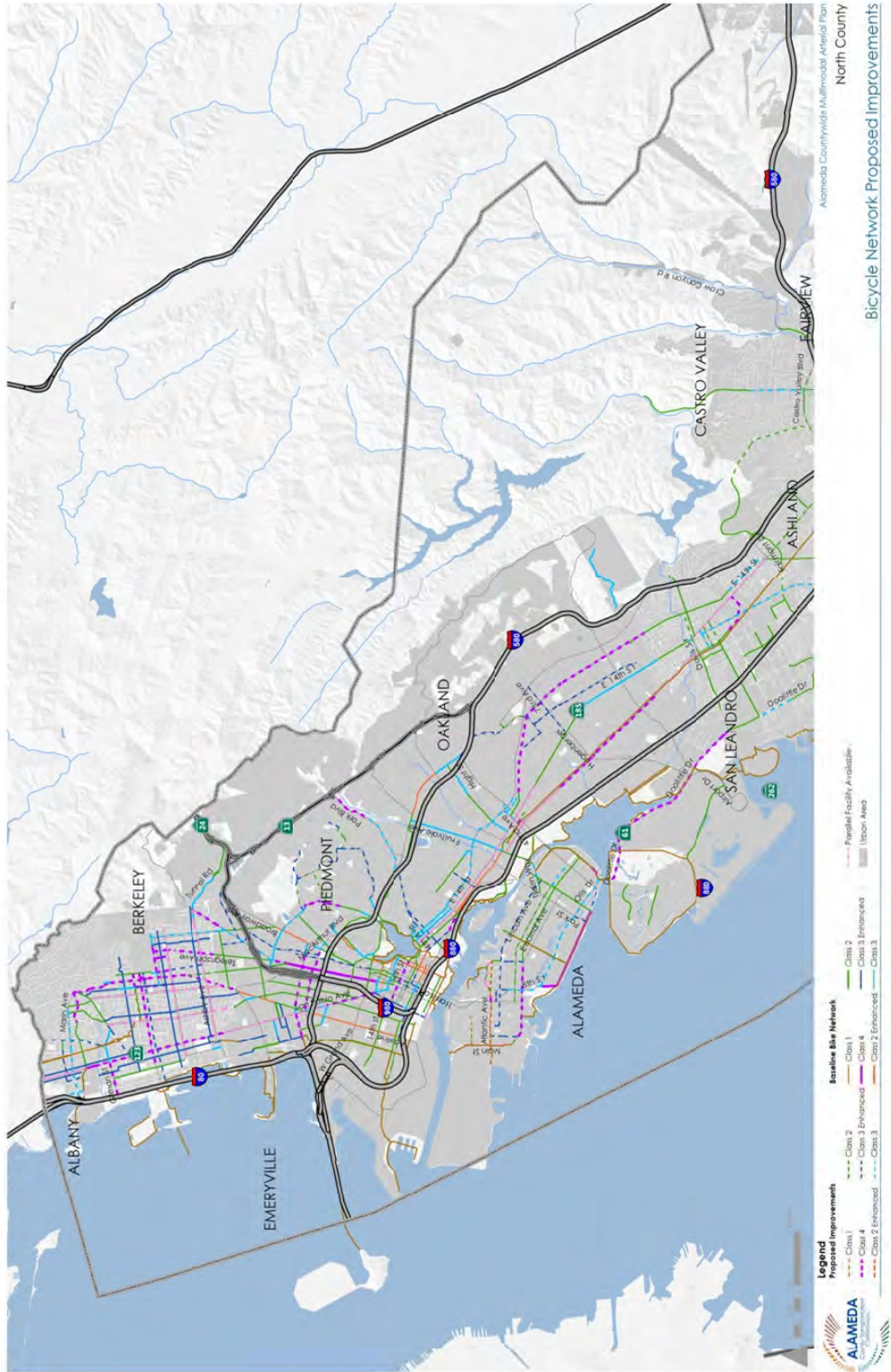


Figure H-6: AC Transit - Map of Major Corridors

Major Corridors Study
Final Report – DRAFT

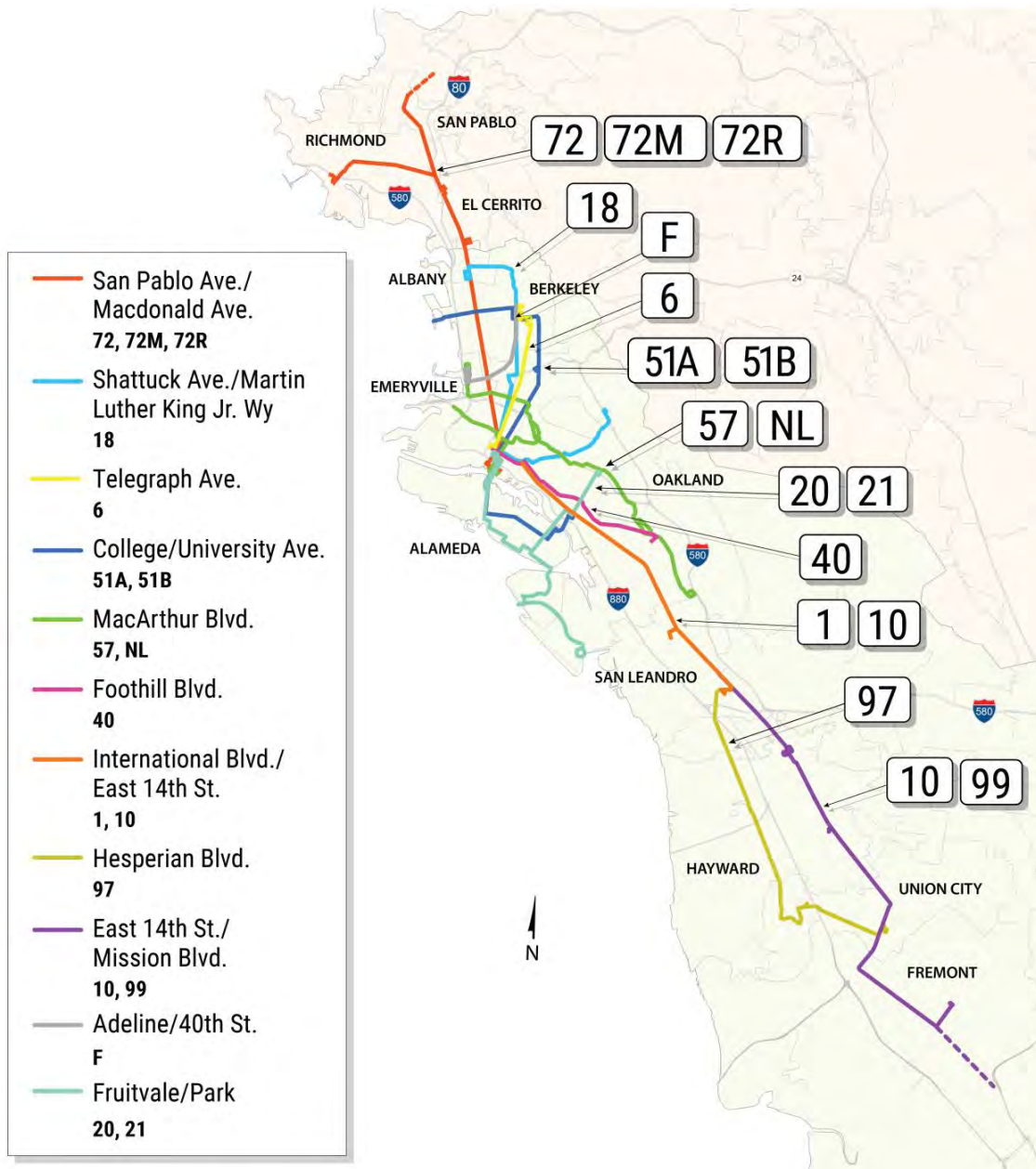


Figure 4: Map of Major Corridors

Figure H-7: San Pablo Avenue/Macdonald Avenue Corridor Map



Figure H-8: Shattuck Avenue/Martin Luther King Jr. Way Corridor Map

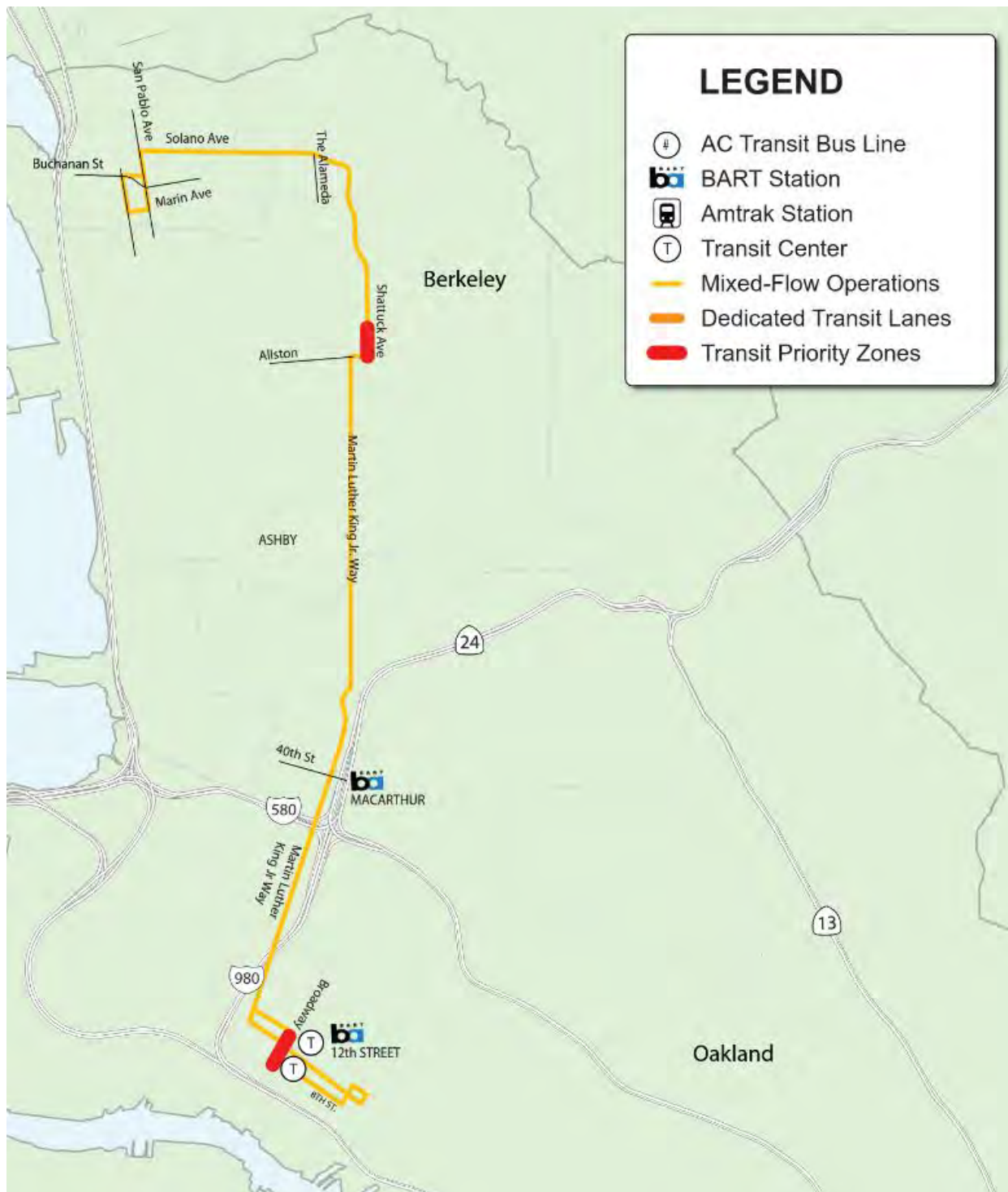


Figure H-9: Broadway/College Avenue/University Avenue Corridor Map



Figure H-10: Adeline Street Map



Figure H-11: Telegraph Avenue Corridor Map



FINAL PLAN

This page intentionally left blank.

